

Abi specialises in all aspects of personal injury litigation (claimant and defendant), industrial disease (mainly asbestos, but also VWF/HAVS and deafness) and fatal accident/disease litigation. All other areas of law with medical issues, including clinical negligence, CICA and Inquests, particularly arising out of clinical negligence and asbestos exposure.

Her challenging PI cases include: complex orthopaedic injuries; chronic pain and somatoform disorder; animals (particularly horse-related accidents); dental injuries; mesothelioma, asbestosis and low asbestos exposure; civil proceedings for multiple attempted rape and physical assaults; neglect of elderly relatives in nursing care.

Cases have included advising on accidents which have occurred abroad in and outside Europe.

Abi has undertaken professional regulatory work, acting for Registered Nurses in NMC proceedings and also before the Care Standards Tribunal, GMC, a medical student in a University/GMC-related disciplinary issue a dentist, including in relation to their NHS Trust, and she has also advised Radiographer and Health and Care Professionals' Council - HCPC.

Personal Injury

PI case values range from fast track to £million plus.

Recent cases successfully concluded include:

General PI - Non-disease/Orthopaedic:

Brian Injury – Client was violently assaulted and left for dead by her ex-partner. Client was left with severe head injuries – cognitive functioning, hearing, speech, memory and balance. This case had to be resolved as a CICA case. TCL, Stanmore.

Brain Injury/clinical negligence – Miss AM Developed a viral infection (herpes simplex encephalitis) causing brain damage as the virus destroyed the brain. Hospital failed to diagnose HSE and negligently treated with oral acyclovir instead of intravenous, left client with problems including the mental age of an 8 year old. Complex causation and quantum issues. Feld, McKay & Donner Solicitors, Rochdale.

Spinal Injury – Passenger in a Road Traffic Accident. Suffered multiple injuries including the removal of spleen. Neurosurgeon confirmed a loose bone fragment in the intervertebral canal which was moving. This involved risks of damaged nerve roots or worse. Complex neurosurgery to remove bone fragment. Silverbeck Rymer, London.

Serious soft tissue back injury in claimant with pre-existing type 1 Neurofibromatosis. Complex causation problems. AMV Law, Barnet.

Mining accident – falling materials leading to serious developing injuries – Watson Burton Solicitors, Newcastle.

Contralateral amputations following accident to pedestrian on railway. Silverbeck Rymer, Liverpool.

Teenager severely burned in barn fire – Feld McKay & Donner Solicitors, Rochdale.

Police officer repeatedly assaulted and attempt rape by her older police officer partner – Ralli Solicitors, Manchester.

Elderly patient in care with dementia – serious injuries, there were no witnesses for Claimant – Ralli solicitors, Manchester.

Case where claimant had elements of somatoform disorder. Defendant asserted exaggeration. Significant challenges with obtaining expert evidence post-Jackson. AMV Law, Barnet.

Horse riding accidents - claimants riding other peoples' unfamiliar horses – lack of instruction, supervision and unsafe systems – GLP solicitors, Bury and Feld, McKay & Donner, Rochdale.

Industrial Disease

Many deceased mesothelioma cases and several asbestosis cases where Defendant argued de minimis exposure, including successful against 11 day employment – Higgins & Co Birkenhead, JMP Solicitors Warrington, Birchall Blackburn Solicitors Manchester.

Advised in several hundred British Coal Respiratory (Chronic Bronchitis, COPD and pneumoconiosis) cases and some VWF scheme cases.

Deceased mesothelioma cases where practically all employment pre-1954 – Ralli Solicitors, Manchester

Cases with significant issues relating to causation where diagnosis asbestosis versus idiopathic pulmonary fibrosis (usual interstitial pneumonia). Roberts Jackson, Wilmslow.

Mesothelioma case of woodworker where uncertainty of materials being processed uncertain – John Pickering Solicitors, Manchester

Upper limb disorder from use of staple gun at work – Irwin Mitchell, Leeds



CONTACT DETAILS

Email:

abi.holt@lincolnhousechambers.com

Telephone:

0161 832 5701

PRACTICE AREAS

Civil Law
Industrial Disease
Inquests
Mediation
Professional Discipline

MEMBERSHIPS

APIL
PIBA
UK Association of Women Judges

VOLUNTEERING

Abi has been mentoring A level students at Xaverian 6th Form College in Rusholme each year since 2009

LANGUAGES

Spanish (Conversational)
French

EDUCATION

Manchester University – MA in Healthcare Ethics and Law (part-time 2000-2)

Inns of Court School of Law 1992/3

Oxford University (MA Jurisprudence) 1989-92

Bury Grammar School

Clinical Negligence

Cases have included failure to diagnose scaphoid fractures, macular degeneration, slipped femoral epiphysis in child, failure to diagnose Crohn's disease, breast cancer and herpes simplex encephalitis. Also, failure to diagnose and treat DVT, resulting in serious injury and death. (In one case advising defendant in employer's liability case identified clinical negligence resulting in significant contribution from negligent health authority.)

The CICA cases Abi has been involved in have included a number of sensitive cases for local authorities on behalf of children (now in care) who have been sexually abused, including where it has been inappropriate to call them as witnesses. Also police officers (instructed by Russell Jones and Walker, Manchester) and a nurse subject to assault at work (instructed by Royal College of Nursing, Bolton).

Inquests

Include many mesothelioma, asbestosis and lung cancer deaths. Also suicide for young woman in presence of police officers (Russell Jones and Walker, Manchester); Also death of a senior doctor under extreme pressures from media as a result of professional standing in the community – (Pannone, Manchester); nurse alleged to have neglected patient (Royal College of Nursing).

Professional Regulation

Finding of no impairment for Registered Nurse accused of having hit a patient – Royal College of Nursing, Bolton.

Overturning of CQC's (Care Quality Commission) refusal to register a foreign-trained nurse as Care Home Manager by Care Standards Tribunal - Royal College of Nursing, Bolton.

Nurse admitted to failing to follow prescriptions for babies in Paediatric Intensive Care Unit - Royal College of Nursing, Sunderland

Dentist charged with fraud - maintaining of permission to practice for NHS during course of police investigation – Pannone, Manchester

Other General Common Law

Especially other contractual and tortious cases. Also, health and safety prosecutions of businesses especially for food hygiene issues. Successful cases have included:

Challenging government contract tendering process – Molesworths Bright Clegg, Rochdale

Advising in commercial lease dispute – Wrigley Claydon Solicitors, Oldham

50% reduction in fine for successful food business prosecuted for health and safety breaches upon appeal

Mediator and Mediation Advocacy

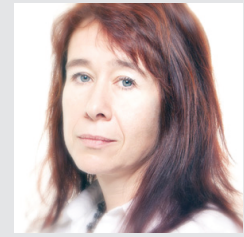
Abi is a fully trained mediator, although recent mediation work has been as mediation advocate on a number of complex PI cases which were not amenable to settlement by joint settlement meeting.

Other Professional Interests

Part-time (fee paid) First Tier Tribunal Judge in the Immigration and Asylum Chamber

Personal

Keeping fit (to counter the hours in front of the WP!) swimming, horse-riding, yoga, gym, hiking. Also food/cooking (have worked as chef in "good food guide" restaurants in France and Manchester in the past), learning Spanish, "arthouse" films and travel (e.g. South America, India & Malaysia). Renovating a Catalan farmhouse in Priorat. Failing to keep grip on family.



CONTACT DETAILS

Email:

abi.holt@lincolnhousechambers.com

Telephone:

0161 832 5701

PRACTICE AREAS

Civil Law

Industrial Disease

Inquests

Mediation

Professional Discipline

MEMBERSHIPS

APIL

PIBA

UK Association of Women Judges

VOLUNTEERING

Abi has been mentoring A level students at Xaverian 6th Form College in Rusholme each year since 2009

LANGUAGES

Spanish (Conversational)

French

EDUCATION

Manchester University – MA in Healthcare Ethics and Law (part-time 2000-2)

Inns of Court School of Law 1992/3

Oxford University (MA Jurisprudence) 1989-92

Bury Grammar School