

Lincoln House Chambers Diversity Data

Statistics

72 Barristers

3 Pupils

13 Staff

26 Responses to the Diversity Data Questionnaire

This is a summary of the Lincoln House Chambers diversity data. The statistics forming the basis of this summary have been collated from 26 people who chose to complete and return the diversity questionnaire. Accordingly 70.5% of people have not provided any data and this summary only reflects 29.5% of people in Chambers.

This summary will be reviewed and recalculated no later than three years following publication in accordance with the BSB's requirements.

LINCOLN HOUSE CHAMBERS

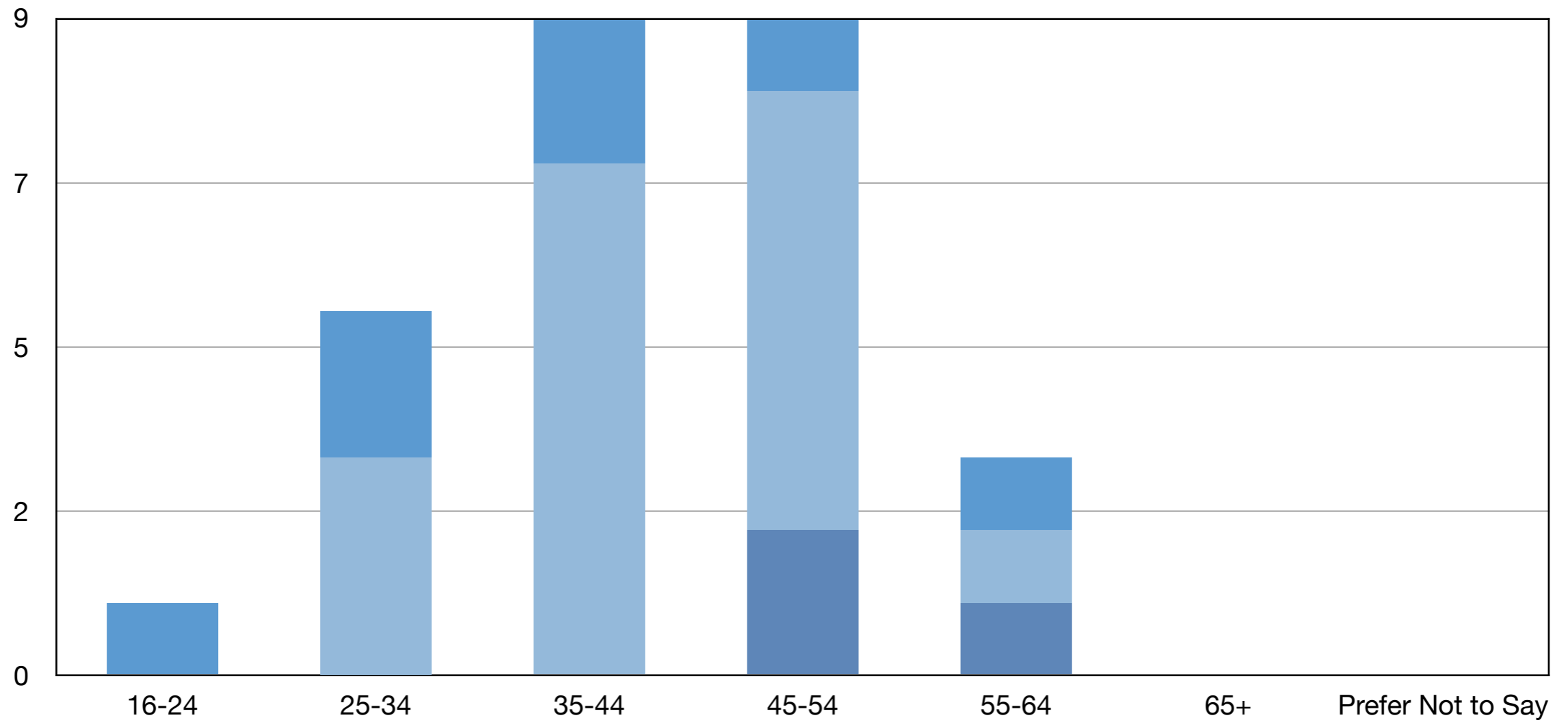
8TH FLOOR, TOWER 12, 18-22 BRIDGE STREET, SPINNINGFIELDS, MANCHESTER M3 3BZ

T 0161 832 5701 F 0161 832 0839 E INFO@LINCOLNHOUSECHAMBERS.COM



QC Tenant Pupil Staff Prefer Not to Say

Age



LINCOLN HOUSE CHAMBERS

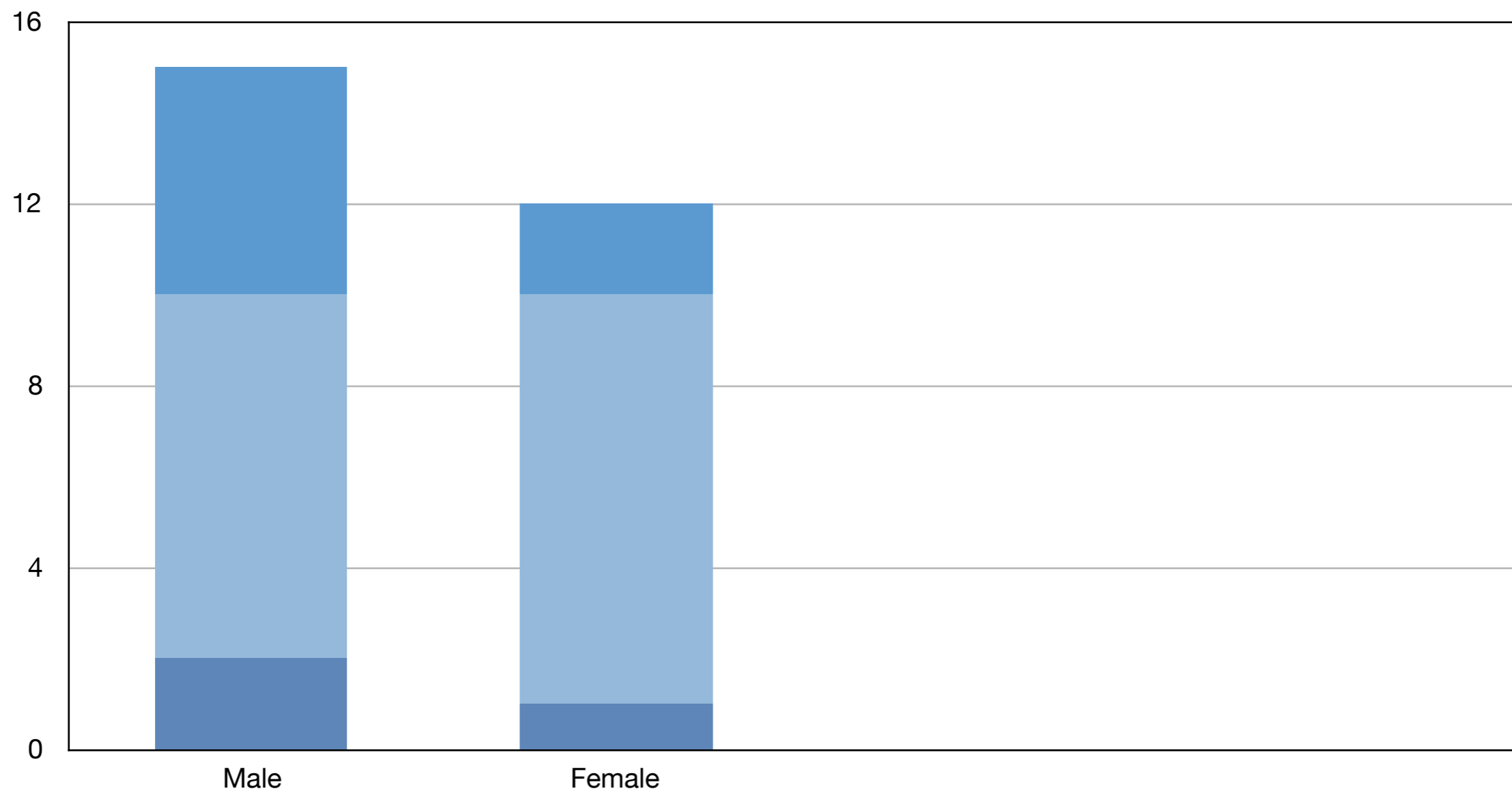
8TH FLOOR, TOWER 12, 18-22 BRIDGE STREET, SPINNINGFIELDS, MANCHESTER M3 3BZ

T 0161 832 5701 F 0161 832 0839 E INFO@LINCOLNHOUSECHAMBERS.COM



QC
 Tenant
 Pupil
 Staff
 Prefer Not to Say

Gender



LINCOLN HOUSE CHAMBERS

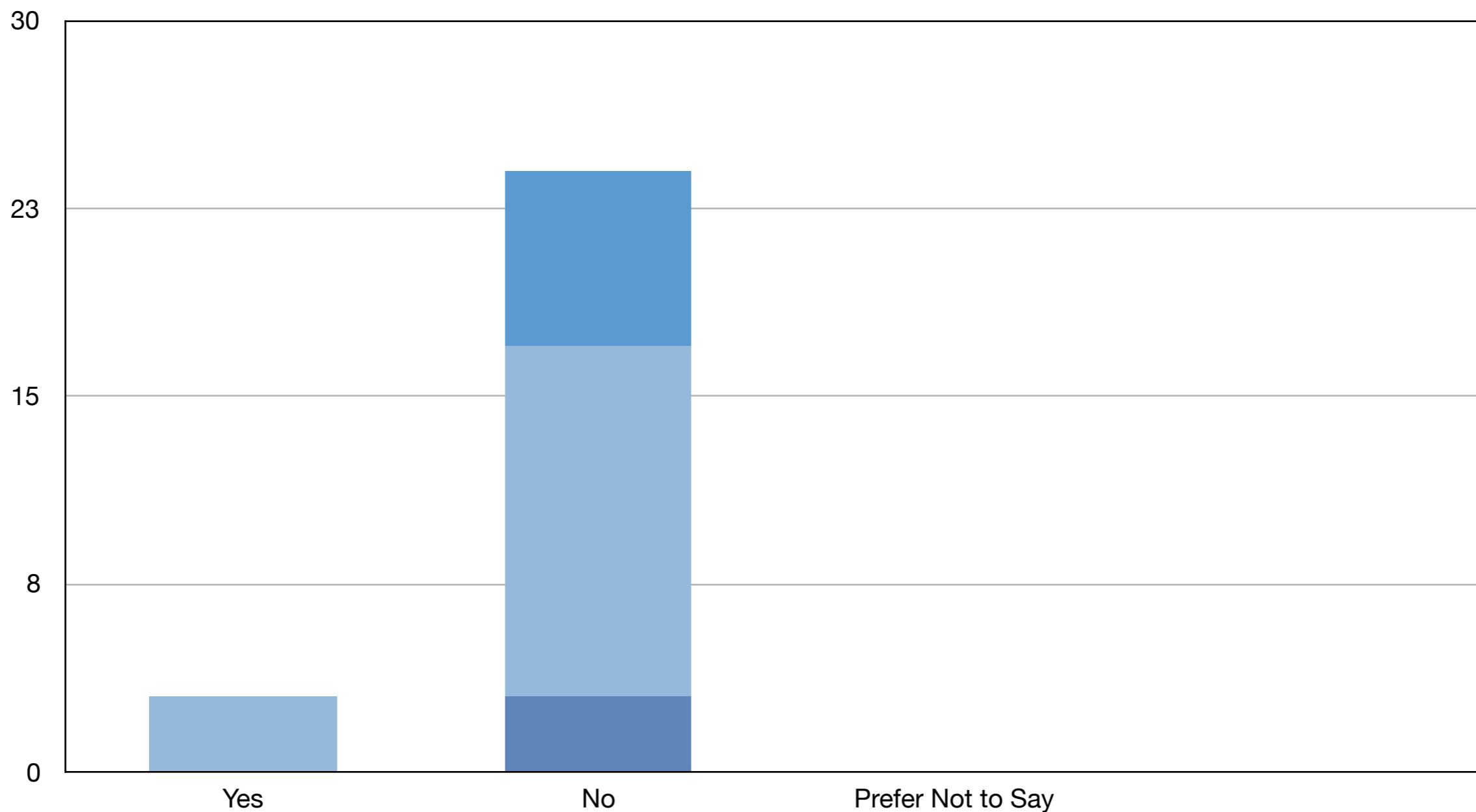
8TH FLOOR, TOWER 12, 18-22 BRIDGE STREET, SPINNINGFIELDS, MANCHESTER M3 3BZ

T 0161 832 5701 F 0161 832 0839 E INFO@LINCOLNHOUSECHAMBERS.COM



QC
 Tenant
 Pupil
 Staff
 Prefer Not to Say

Disability



LINCOLN HOUSE CHAMBERS

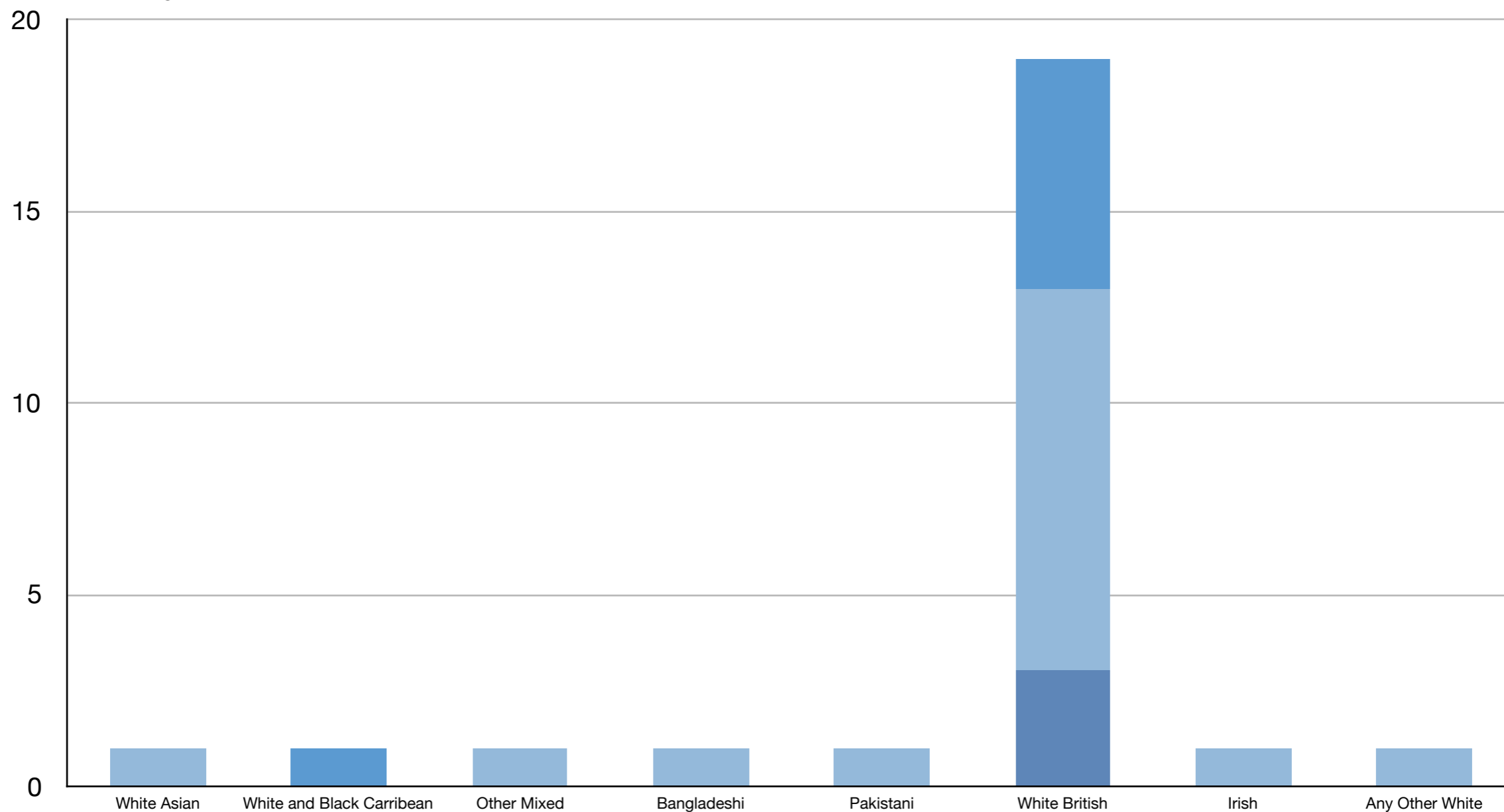
8TH FLOOR, TOWER 12, 18-22 BRIDGE STREET, SPINNINGFIELDS, MANCHESTER M3 3BZ

T 0161 832 5701 F 0161 832 0839 E INFO@LINCOLNHOUSECHAMBERS.COM



QC
 Tenant
 Pupil
 Staff
 Prefer Not to Say

Ethnicity



LINCOLN HOUSE CHAMBERS

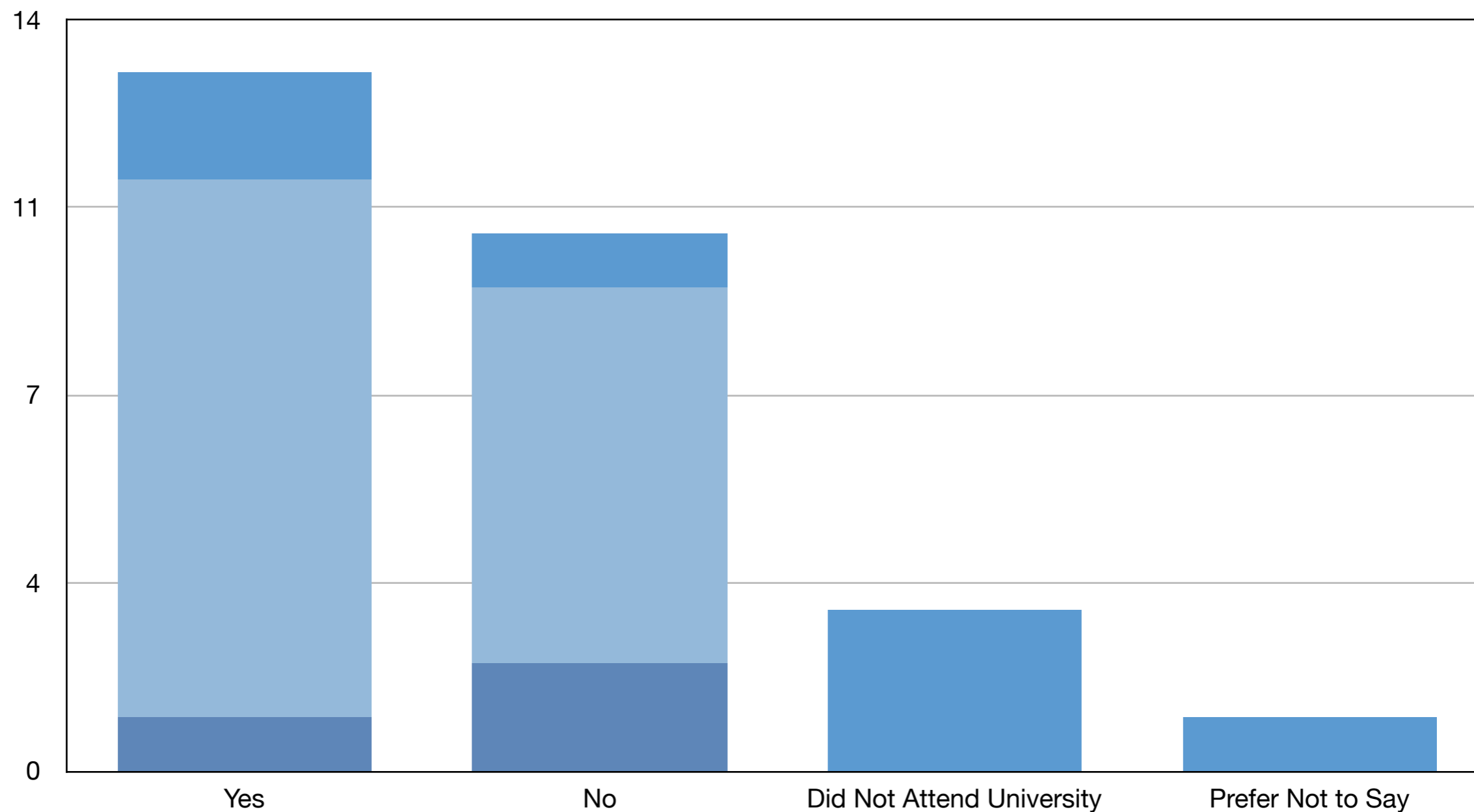
8TH FLOOR, TOWER 12, 18-22 BRIDGE STREET, SPINNINGFIELDS, MANCHESTER M3 3BZ

T 0161 832 5701 F 0161 832 0839 E [INFO@LINCOLNHOUSECHAMBERS.COM](mailto:info@lincolnhousechambers.com)



QC
 Tenant
 Pupil
 Staff
 Prefer Not to Say

Socio Economic Background (If you went to University, were you part of the first generation of your family to do so?)



LINCOLN HOUSE CHAMBERS

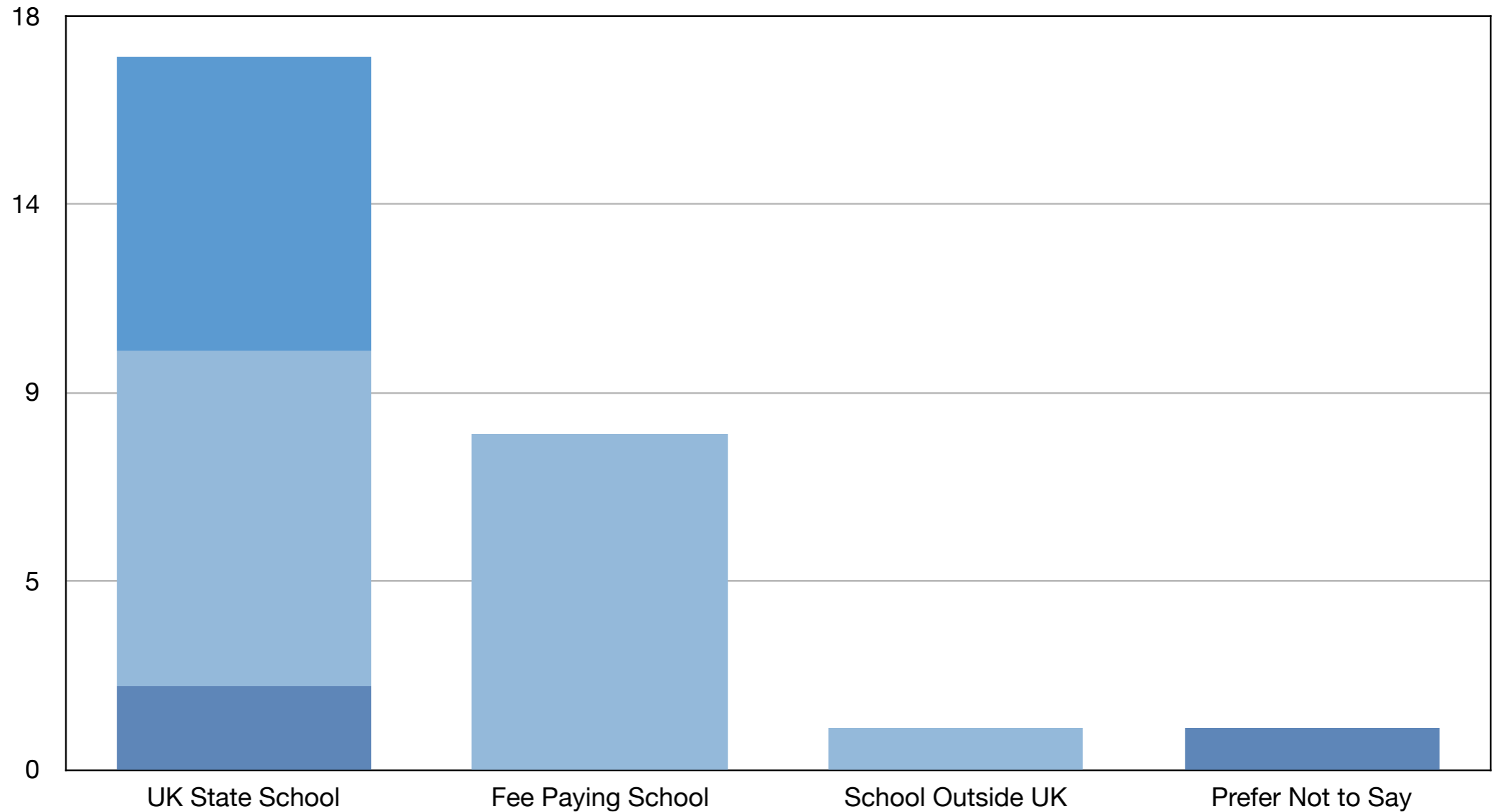
8TH FLOOR, TOWER 12, 18-22 BRIDGE STREET, SPINNINGFIELDS, MANCHESTER M3 3BZ

T 0161 832 5701 F 0161 832 0839 E INFO@LINCOLNHOUSECHAMBERS.COM



QC
 Tenant
 Pupil
 Staff
 Prefer Not to Say

Socio Economic Background (Did you mainly attend a state or fee paying school between the ages 11-18?)



LINCOLN HOUSE CHAMBERS

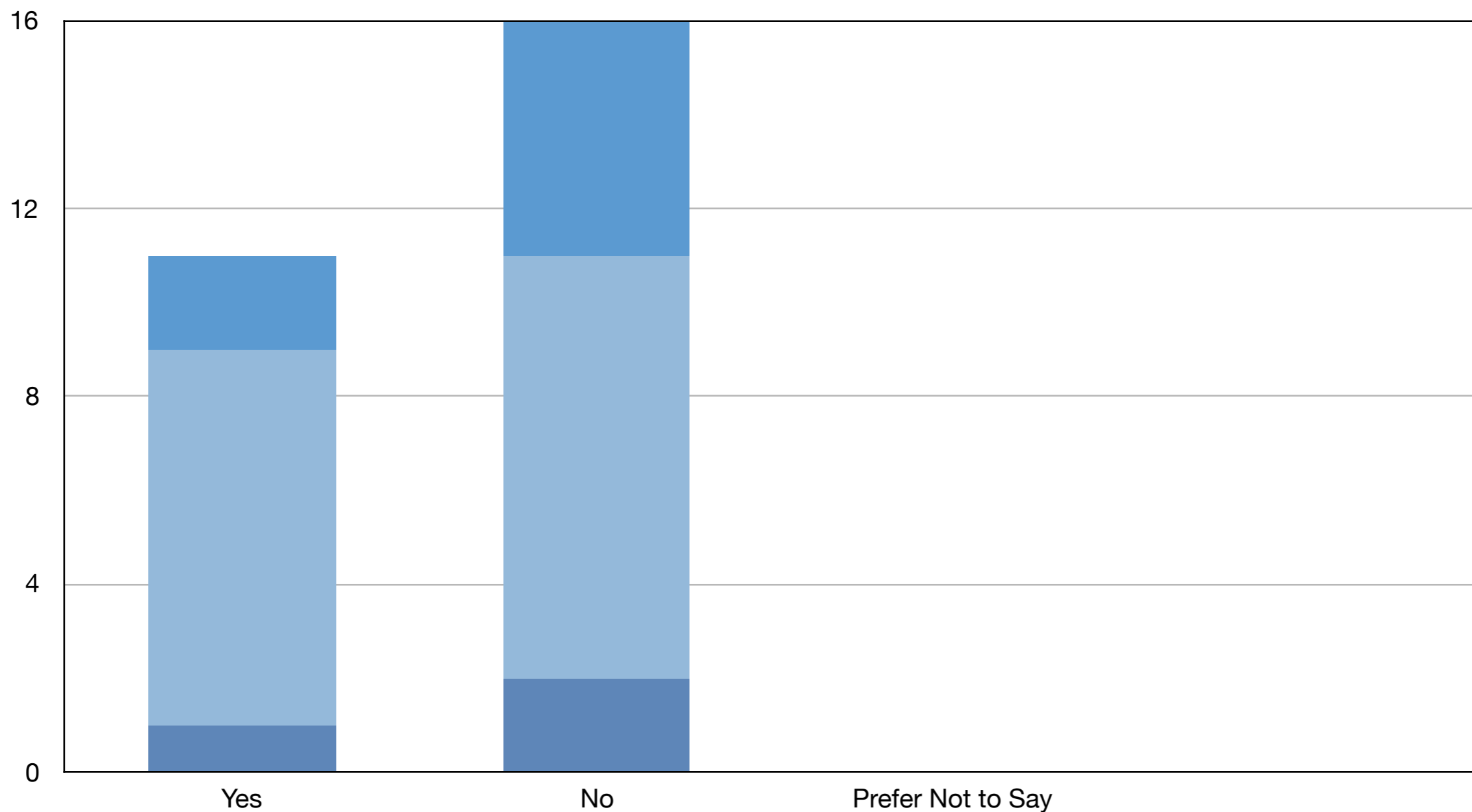
8TH FLOOR, TOWER 12, 18-22 BRIDGE STREET, SPINNINGFIELDS, MANCHESTER M3 3BZ

T 0161 832 5701 F 0161 832 0839 E INFO@LINCOLNHOUSECHAMBERS.COM



QC
 Tenant
 Pupil
 Staff
 Prefer Not to Say

Caring Responsibilities (Are you a primary carer for a child or children under the age of 18?)



LINCOLN HOUSE CHAMBERS

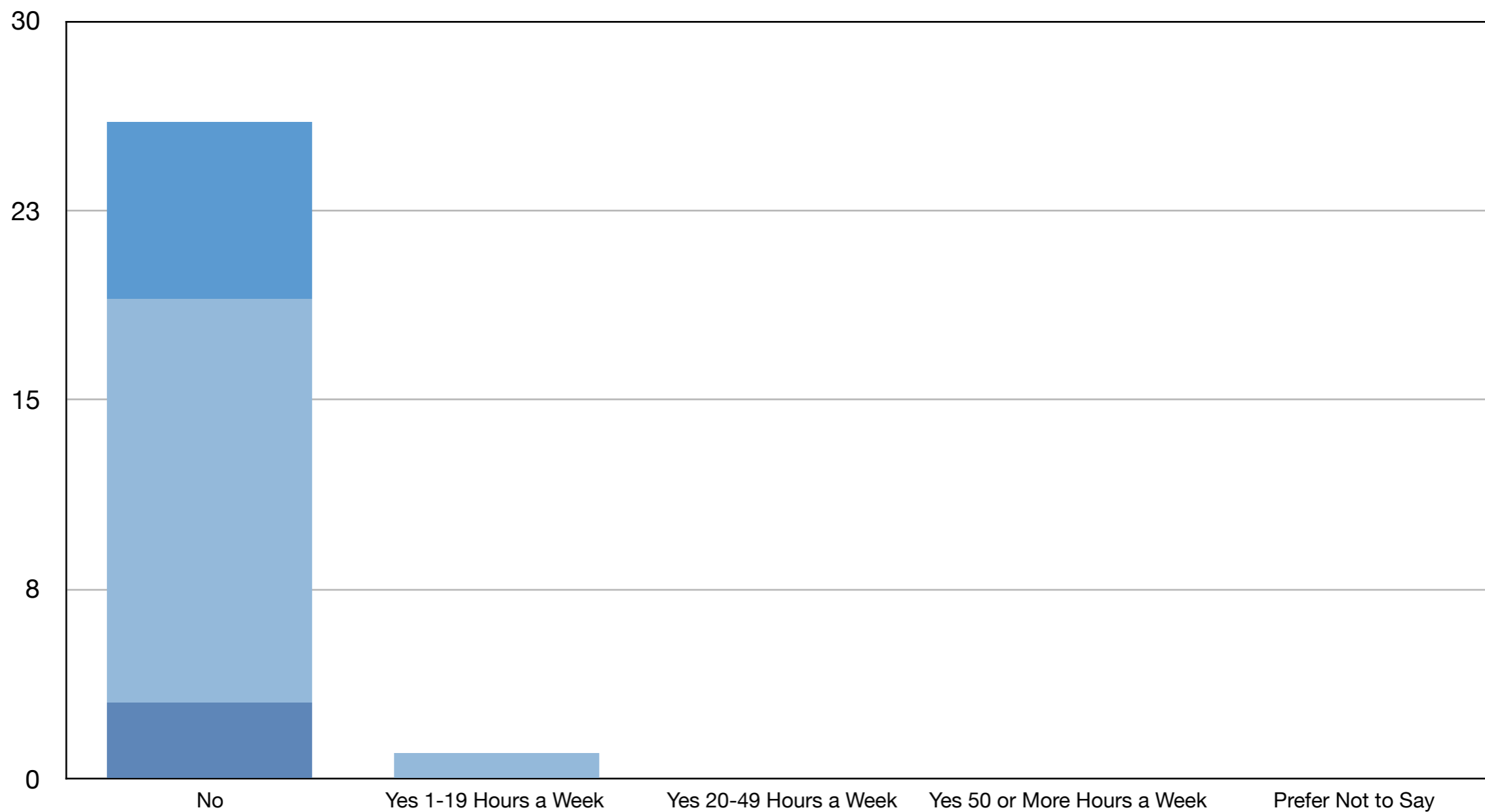
8TH FLOOR, TOWER 12, 18-22 BRIDGE STREET, SPINNINGFIELDS, MANCHESTER M3 3BZ

T 0161 832 5701 F 0161 832 0839 E [INFO@LINCOLNHOUSECHAMBERS.COM](mailto:info@lincolnhousechambers.com)



QC
 Tenant
 Pupil
 Staff
 Prefer Not to Say

Caring Responsibilities (Do you look after, help or support, family members, friends, neighbours or others?)



LINCOLN HOUSE CHAMBERS

8TH FLOOR, TOWER 12, 18-22 BRIDGE STREET, SPINNINGFIELDS, MANCHESTER M3 3BZ

T 0161 832 5701 F 0161 832 0839 E [INFO@LINCOLNHOUSECHAMBERS.COM](mailto:info@lincolnhousechambers.com)

